



FC023

VXF

Lime-based plaster for thick effects.

VXF is a natural lime putty-base mineral plaster finish with a 0.75 mm uniform grain structure.

VXF may be used to achieve different effects depending on the application technique used and the tool employed.

Application tools: stainless steel trowel

Dilution: ready to use

Consumption/Yield: 3,5 - 4,5 kg/m² / 0,2-0,3 m²/kg according to the finish
Interior only

www.vierodecoratives.com

MMEXCC0120

WF



VXF

Viero



FC204



FC159



FC084



FC068



FC064



FC100



FC104



FC020



FC212



FC207



FC211



FC080



FC056



FC071



FC099



FC107



FC063



FC168



FC206



FC210



FC040



FC067



FC079



FC098



FC091



FC062



FC171



FC190



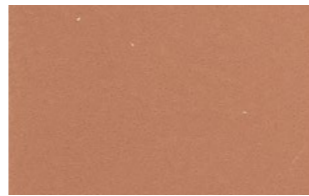
FC198



FC059



FC035



FC055



FC075



FC086



FC011



FC154



FC191



FC195



FC072



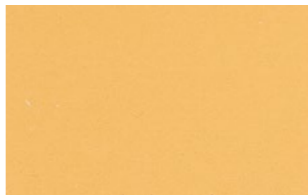
FC043



FC032



FC083



FC087



FC007



FC147



FC196



FC200



FC088



FC044



FC051



FC076



FC060



FC004



FC132

The colours displayed are obtained with a typographical system and are purely indicative, they may vary according to the support and exposure to light and atmospheric agents.